

Introduction

Versatile and scalable, SpiderAlert provides real-time emergency signaling and event location for institutional and commercial applications, including healthcare, educational and correctional facilities. SpiderAlert enhances on-site protection, as well as the personal security of individuals.

The SpiderAlert™ solution provides WWW™ information as follows:

- **Who** is carrying the tag/transmitter? (Identifies the person or equipment)
- **When** did the transmitter last trigger an event?
- **Where** did the last transmitter event occur?
- **What**, a unique feature of EIRIS™ enables the system to provide vital status information about tagged entities, such as mandown alerts, low battery, tamper and supervision.

Architecture

SpiderAlert is a field-proven modular system featuring networked two-way controls for real-time emergency signaling and precise event location information. SpiderAlert solutions are based on the SpiderBus together with a wide range of wireless devices in a local-area signaling network. The SpiderAlert system combines dual technology, IR and RF signals, to provide cost-effective, user-friendly and flexible signaling solutions.

The SpiderAlert system architecture is comprised of four main levels:

- **Dual Technology Receivers and Transmitters**
- **SpiderBus**
- **EIRIS™ Server/Operating System**
- **EIRIS SpiderAlert Applications**

Solutions

Personal Security

SpiderAlert's Personal Security/Staff Attack solutions increase staff security and improve productivity in various settings, including healthcare facilities, schools and correctional institutions, by providing emergency signaling at the push of a button. In the framework of Personal Security solutions, staff, patients and other persons are assigned personalized, lightweight easy-to-carry transmitters which incorporate dual IR/RF technology. Help can be requested by pressing the transmitter's button or pulling its cord. The tag immediately sends IR and RF signals and an event is generated, allowing the system to accurately pinpoint and identify the transmitter's location and provide this information to security staff in real-time.

Art Security

Artwork protection systems integrate a network of anti-jamming wireless and wired security components, together with specialized wireless detectors for the protection of diverse types of works of art, to significantly reduce the risk of theft, assault and break-ins. Museum exhibition areas are environments that are generally open to the public. Although visitors may not be permitted to actually approach objects on display, someone, for whatever reason, might attempt to touch or remove an item. The SpiderAlert™ Artwork Security system incorporates wireless, non-invasive detectors that are sensitive to movement or removal of the artwork. The moment a painting is moved or a break-in occurs, an audible or silent alarm is activated, and the on-site monitoring center is notified. The system identifies the source and location of events to enable fast and accurate response.

Tags/Transmitters

MCT/IR-201 WP S

Pendant RF+IR Transmitter

MCT/IR-201 WP S is a miniature RF+IR transmitter used to send out alert messages that allow the target receiver to accurately determine the specific transmission point in multi-story buildings.

- RF+IR technology permits a high degree of detection accuracy
- Report includes transmitter ID codes and alert code
- Unit includes 12V alkaline battery



MDT-122 S

Man-Down Transmitter

MDT-122 S is an emergency transmitter used by security personnel for automatic man-down signaling, in multi-story buildings. The transmitter is designed for correctional facilities, mental health institutions and military bases.

- Built-in tilt switch activates man-down transmitter, when user is knocked down
- Pull cord activates alarm or emergency signal when attempt is made to remove unit from belt
- Transmission includes RF and IR
- Internal 3.6V lithium battery
- Optional tracking signal upon emergency every 30 seconds
- Beltclip and nylon holster included



MCT-101 S, MCT-102 S, MCT-104 S

Handheld Transmitters

MCT-101 S (1-channel), MCT-102 S (2-channel) and MCT-104 S (4-channel) are multi-purpose handheld transmitters, designed for multi-function applications, such as arming and disarming the alarm system, switching on lights, opening a garage door or emergency signaling.

- Superior transmission range
- Long battery life
- Clips easily to belt or tucked inside a pocket or purse



MCT-201 WP S

Pendant Transmitters

MCT-201 WP S (waterproof) is a transmitters designed for emergency and control applications in wireless systems.

- Transmission activated by depressing the push-button
- Unique code, factory-selected from 16 million combinations
- Internal 12V alkaline battery
- Supplied with attached chain and key ring



MCT-211 S

Waterproof Wrist Transmitter

MCT-211 S is a waterproof wrist-worn transmitter designed for personal emergency signaling and other applications where the transmitter needs to be within easy reach at all times.

- Transmission is initiated by depressing transmitter's push-button
- Internal coin-type, 3V lithium battery that can last up to 10 years



MCT/IR-252 WP S

Resettable pendant RF+IR Transmitter
MCT-252 WP S (waterproof) is an RF and IR resettable transmitter designed for emergency and control applications in wireless systems.

- Microprocessor-controlled personal transmitter
- Two separate pushbuttons for Panic and Assist messages
- Dual technology, RF and IR transmission for accurate location identification
- Optional message cycling with special escalation feature
- Unique factory programmed ID code
- Low battery indication and reporting
- Supplied with neck chain and key ring
- Waterproof for depth of 32 feet/10 meters
- Internal 3V lithium battery



Wireless Detectors

MCT-100 S

2-Input Wireless Transmitter

MCT-100 S is a fully supervised wireless transmitter designed for protecting doors, windows or other objects and for use in a variety of security and control applications.

- Compatible with virtually any normally open (NO) or normally closed (NC) device connected to its two end-of-line (EOL) protected inputs
- Compatible with diverse inputs, including pushbuttons, sensors, contacts, switches and other detection devices



MCPIR-2000 S

Wireless PIR Detector

MCPIR-2000 is an advanced, fully supervised, wireless PIR detector that incorporates a PowerCode™ transmitter.

- Internal long-life lithium battery
- Auto-disarm after triggering to save battery
- Optical coverage 18 x 18 m (60 x 60 ft.), a variety of interchangeable lenses
- Programmable pulse counter for maximum false alarm immunity



MCT-302 N S

Wireless Magnetic Contact Transmitter

MCT-302 N S is a fully supervised wireless magnetic contact transmitter designed primarily for protecting doors and windows using a built-in magnetic contact that operates in conjunction with a magnet to detect the opening and closure of a door or window.

- An auxiliary hardwired input for additional security sensors
- Periodic supervision message transmitted automatically



MCT-425 S

Smoke Detector

MCT-425 S is a fully supervised photoelectric wireless smoke detector fitted with a fully supervised UHF transmitter. It is designed for a wide range of residential and commercial applications where reliable smoke detection is required.

- Superior detection sensitivity (2.3 ± 1.2%/ft.)
- Sound and transmitted alerts (smoke, tamper, low battery).
- Long-life 9 Volt alkaline or lithium battery.
- Simple ceiling-mount installation with no mess.



MCT-501 S

Wireless Acoustic Detector

The MCT-501 is a fully supervised digital glass-break wireless detector. It is designed for a wide range of residential and commercial applications where reliable glass-break detection is required.

- Advanced patented acoustic pattern recognition technology that can reliably distinguish between true alarms and false alarms
- 360-degree detection range of up to 6m (20 ft)
- Ability to detect breaking of different types of glass including plate, tempered, laminated and wired glass



Discovery PIR MCW S

Wireless PIR Detector

The Discovery PIR MCW is a fully supervised wireless PIR detector for professional installers and end-users alike. Suitable for residential, commercial and light industrial applications.

- Fully supervised wireless detector with anti-collision PowerCode™ technology.
- 3 Volt long life high power standard Lithium battery.
- Long-term stability and reliability thanks to advanced true digital processing.
- Ultimate false alarm immunity based on patented True Motion Recognition™ with "Event Verification" algorithm.
- Sealed optics protects from insects and air currents.
- Integral swivel bracket for ceiling or wall mounting, simplifies installation and control of the detection pattern.
- Approved and available in various frequency bands according to international standards.
- 15mx15m (50ft x 50ft) high sensitivity coverage.



SPD-1000

Wireless Magnetic Displacement Detector

SPD-1000 is a fully supervised wireless detector used for protection of paintings, sculptures and other artwork, in museums, galleries, private collections and places of worship.

- Intelligent detection algorithms, combined with high-resolution bi-directional displacement sensitivity, indicate item touching, paint scratching, canvas cutting or removal of the secured item
- Automatic transmission of detector's unique ID to the controller when a Touch or Removal alarm is triggered
- Location tracking is available in item removal situation

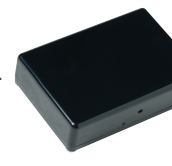


SPD-2000

Wireless Spatial Position Detector

SPD-2000 is a fully supervised wireless detector, designed for protection of paintings, sculptures, and other artworks, in museums, churches and galleries, and for protection of valuable paintings at home. When the secured object is moved, the detector transmits an identifiable alarm message.

- High sensitivity 2-axis acceleration sensor (in a silicone chip), which measures the static (e.g. vibration) and dynamic (e.g. gravity) accelerations
- Automatic transmission of Restore message when the object is at rest again
- Continuous and automatic supervision and reporting



Bus Devices

SR-500 (ER)

Wireless Receiver

SR-500 (ER) wireless receiver is an interface unit between wireless transmitters and the SpiderBus. The SR-500 ER has a higher sensitivity receiver that enables longer communication range.

- Combination of transmitter ID with receiver ID indicates who generated the event and where the event occurred
- Continuous supervision for trouble indication
- 2 controlled outputs (pulled LOW) by head-end computer
- Three inputs for normally-closed sensors
- Tamper event reporting



About Visonic Technologies

Visonic Technologies (VT) is dedicated to developing and integrating identification solutions that enhance security, safety and communication throughout the enterprise. Catering to the needs of industries and institutions such as healthcare and correctional facilities, where identification and location of people and assets drives mission-critical performance, VT offers a variety of solutions: a full range of integrated, customized, state-of-the-art tracking and signaling systems as well as effective and economical access solutions. VT is the holding company of Elpas Local Positioning Systems, SpiderAlert Signaling Network Solutions, and VisAccess Access Control Solutions. VT has merged the three product lines to operate with Eiris™, a single, scalable, open platform software solution which draws upon the company's ground-breaking triple technology (IR, RF & LF identifications). With a widespread network of qualified system integrators and strategic alliances with internationally renowned companies such as Honeywell, Siemens, ASCOM and Hill-Rom, Visonic Technologies is expert at tailoring solutions to the unique requirements of its strategic market segments. VT is a member of the Visonic Group, a leading international provider of innovative, wireless automation and control security solutions, and benefits from the corporation's financial backing, expertise and global partnerships.

© Copyright 2003 by Visonic Technologies Ltd.
SpiderAlert is a registered trademark of Visonic Technologies. Visonic Technologies reserves the right to change specifications without prior notice. The information is correct at the time of going to press.
Windows™ is a registered mark of Microsoft Corporation.

Visonic Technologies

Head Office (International):

30 Habarzel Street,
Tel Aviv, 69710 Israel
Tel: 972-3-768-1400
Fax: 972-3-768-1415

email: marketing@visonictech.com

VTA (Visonic Technologies Americas):

10 Northwood Drive
Bloomfield, CT 06002
USA
Tel: 1-800-223-0020
Fax: 1-860-242-8094

email: vta_marketing@visonictech.com

VT UK (Visonic Technologies UK):

Fraser Road
Priory Business Park
Bedford, MK44 3WH
England
Tel: 44-870-730-0840
Fax: 44-870-730-0839

email: vtuk_marketing@visonictech.com

SpiderAlert

SR-520 (ER)

SR-520 (ER) is a dual technology RF and infrared, microprocessor-controlled receiver that receives signals from dual RF/IR transmitters. The SR-520 ER has a higher sensitivity receiver that enables longer communication range.

Both technologies enable pinpointing of accurate location of transmitter and create a verified alarm in multi-story buildings
Combination of transmitter ID with receiver ID indicates who generated the event and where the event occurred
Tamper event reporting
Internal RANGE control for sensitivity adjustment
Continuous supervision for trouble indication



SI-544, SI-561

SI-544 and SI-561 are hardwired I/O units designed to operate via the SpiderBus.

SI-544 serves as an interface between 4 End-of-Line input loops and the SpiderBus. It can be remotely controlled via the bus

SI-561 serves as an input for NO or NC sensors and has 1 output circuit that can be remotely controlled via the SpiderBus



SVC-580R

SVC-580R voice control unit suits both for room-call unit and the main nurse station. It has a wireless receiver option for call activation by SpiderAlert transmitters.

High voice quality and long-range conversation capacity
Broadcast from main-nurse to all or to a group of units
Requires twisted-pair of wires for half-duplex voice communication in addition to the usual 4 wires of the SpiderBus



System and Control

SLC-5, SLC-5 UPS

SLC-5 is a SpiderAlert network local controller for data collection and computer interface.

SLC-5 collects messages and sends commands from and to 255 SpiderBus units
RS-232 interface to the PC
Multisite use with short-haul, fiber optic telephone and wireless modems
Full supervision of SpiderBus units
SLC-5 and power supply unit PS-2 form the SLC-5 UPS unit



SRP-51, SRP-51 UPS

SRP-51 is a repeater used to extend SpiderBus length. Enables long-distance and free-topology wiring to bus devices

Enables downloading parameters and remote commands
Easy troubleshooting and maintenance
SRP-51 and power supply unit, PS-2, form the SRP-51 UPS unit



SRP-54 R

SRP-54 R is a wireless repeater, which functions as a wireless link between two SpiderBus sections. It is designed for use in areas where wired installation is either difficult or impossible, or when wired installation is undesirable.

SRP-54 R together with PS-2 form SRP-54 R UPS. Enables long-distance and free-topology wireless communication to bus devices.



SPT-56

SPT-56 is a junction box and spike suppression unit designed to suppress voltage spikes and transients that might endanger the SpiderAlert units connected to the SpiderBus.

Six telephone-type RJ-11 sockets, for quick attach/detach of all 6 bus wires at once
Two terminal blocks, allow each wire of the bus to be connected or disconnected separately
Suppress voltage above 39 V 10%



PS-2

PS-2 is a high-efficiency 13.8VDC /1A switching-regulated power supply used for SpiderAlert units. The PS-2 is the only authorized power supply to be used to power SLC-5, SRP-51 and SRP-53R products.

Backup battery (if used) constantly charged by the PS-2
Soft start, automatic current limiting and thermal shutdown



SDC-1

The SDC-1 used for full demonstration of SpiderAlert system applications. SDC-1P also includes local pager communication elements.

Products included: SLC-5 UPS, SR-500, SR-520, PS-2, SI-544, SVC-580R, AV-1, Strobe light, MCT-104 S, MCT 201 WP S, MDT-122 S, MCT/IR-201 WP S, MCT-211, SAM-5. Size: 500 x 350 x 180 mm (19.5 x 13 x 6.75 in.)



SL-PTX, SL-ANP

SL-ANP is a pager for use with SL-PTX paging transmitter
Each alphanumeric pager can be programmed with 2 PIN codes
Pager can be part of group-page, as well as its own individual page
Kit includes rubber antenna, plug-in power supply and RS-232 cable



Software

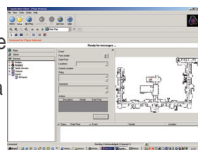
EIRIS

The EIRIS® software platform is a client-server monitoring and control system used to manage all VT systems, as well as third-party network elements and solutions. An open system, EIRIS supports a wide range of drivers and protocols, such as TCP/IP, LonTalk®, RS 232, RS485, and SpiderBus.

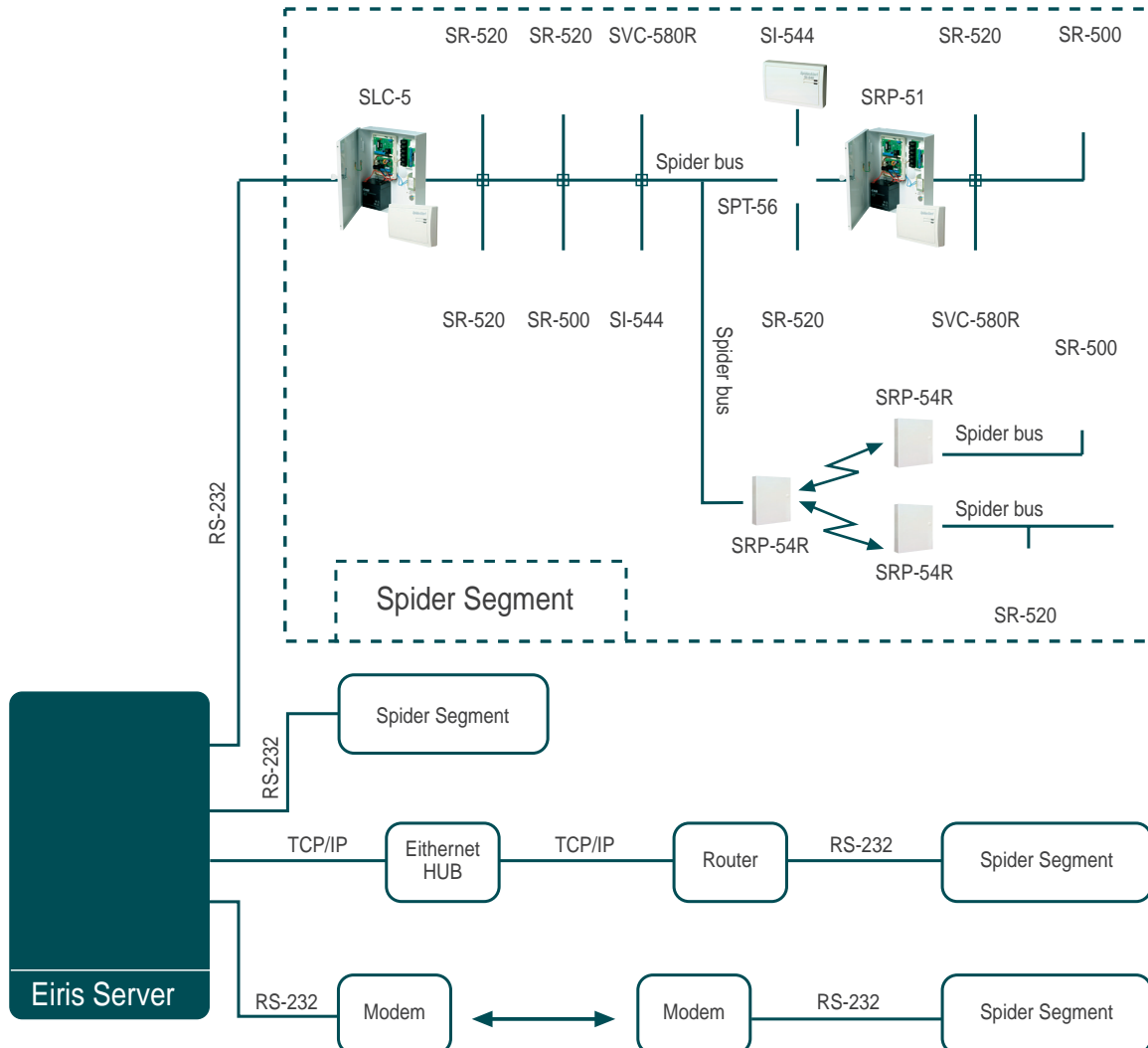
EIRIS is delivered with an intuitive user interface for configuration of complex alarms and operations, as well as continuous display of tag and alert information in both alphanumeric and graphic formats. EIRIS clients are available as desktop applications (EIRIS viewer) and Web browser pages (EIRIS Web viewer).

EIRIS events and configuration information are stored in a relational database management system (SQL server and MS Access)
Integration with third-party communication devices (pager, SMS and DECT systems).
Digital CCTV integration: EIRIS video extensions enable the display of relevant Video streams on the EIRIS Client.

EIRIS Viewer II is the graphic user interface that is installed on a PC connected to the network. It provides a graphical display of the current location of each badge/tag and enables the user to view people or equipment as they move around the workplace. Additionally, subject to the user's level of authorization, users can view the history (i.e. previous activities) of registered badges/tags and/or make changes in the system configuration. The Viewer includes a variety of views, including: Map Display, Badge List, Active Alert List, Alert History Recorder, EIRIS Report Generator and more.



SpiderAlert Architecture



EIRIS Software Platform



Transmitters & Detectors

- MCT/IR 201 WP S
- MDT-122 S
- MCT-101 S
- MCT-102 S
- MCT-104 S
- MCT-201 WP S
- MCT-211 S
- MCT/IR-252 WP S
- MCT-100 S
- MCPIR-2000 S
- MCT-302 N S
- MCT-425 S
- MCT-501 S
- Discovery PIR MCW S
- SPD-1000
- SPD-2000

SpiderAlert Signaling Network Solutions



Product Catalog