

MKP-150

2-Way Wireless Keypad



Visonic®

User's Guide

1. INTRODUCTION

NOTE: RELEVANT TO POWERMAX+ VERSION B AND ABOVE

The device operates using two-way encrypted coded transmission and provides aural and visual indications. For each PowerMax+ control panel, a maximum of two MKP-150 keypad devices may be enrolled.

The MKP-150 may be operated either by AC power supply or by battery power. If AC power is used, the device operates continuously and the system status is constantly updated. If powered by batteries, the keypad enters sleep mode 15 sec after last key press. The keypad immediately becomes operational again upon pressing of any key.

Note: In the event of an AC power failure, the MKP-150 operates on batteries as described above.

The device enables the user to arm/disarm the alarm system, to initiate emergency/fire/panic alarms and to turn lighting devices on and off.

The main features of the MKP-150 are:

- Status, alarm memory, and trouble data retrieval from PowerMax+.
- Automatic reporting to PowerMax+ of low battery voltage, AC failure, tamper.
- Visual indications by red/green/amber LED and LCD display.
- Keypad and LCD back lighting activated by long press (2 sec) of any key.
- Light dim / brightness
- Various audible signals sounded by the speaker in response to specific actions.
- Automatic supervision messages.

- Diagnostic test of PowerMax+.
- Two long-life 3 Volt Lithium batteries.
- Wall mounting.
- Friendly programming.

The Power (green) LED lights when operated using AC power. The Trouble (amber) LED lights if a "trouble" state is currently detected within the PowerMax+. The Chime (green) LED lights when the chime function is active. The Arm (red) LED lights when the system is in armed state (away mode), or flashes (home mode). A periodic supervision message is transmitted, at regular intervals, from the MKP-150 to the PowerMax+ control panel. This ensures MKP-150 active participation in the system.

Operating power is obtained from two 3 Volt Lithium batteries, or by AC. A weak battery causes a "low battery" message to be sent to the PowerMax+.

A Screen Saver appears on the display (if enabled by the installer on the PowerMax+ unit) when no key is pressed for more than 30 seconds. The display reads "POWERMAX" and the LEDs do not light (to prevent an intruder of knowing the system status). The normal display returns after pressing the OFF button followed by entering user code (**Refresh by Code**) or after pressing any key (**Refresh by Key**), depending on the PowerMax+ settings of the installer. If **Refresh by Key** was selected, the first key press (except for Fire and Emergency) causes the normal display to return while a second press performs the key function. In the case of the Fire and Emergency keys, the first key press causes the normal display to return and also performs the Fire/Emergency function.

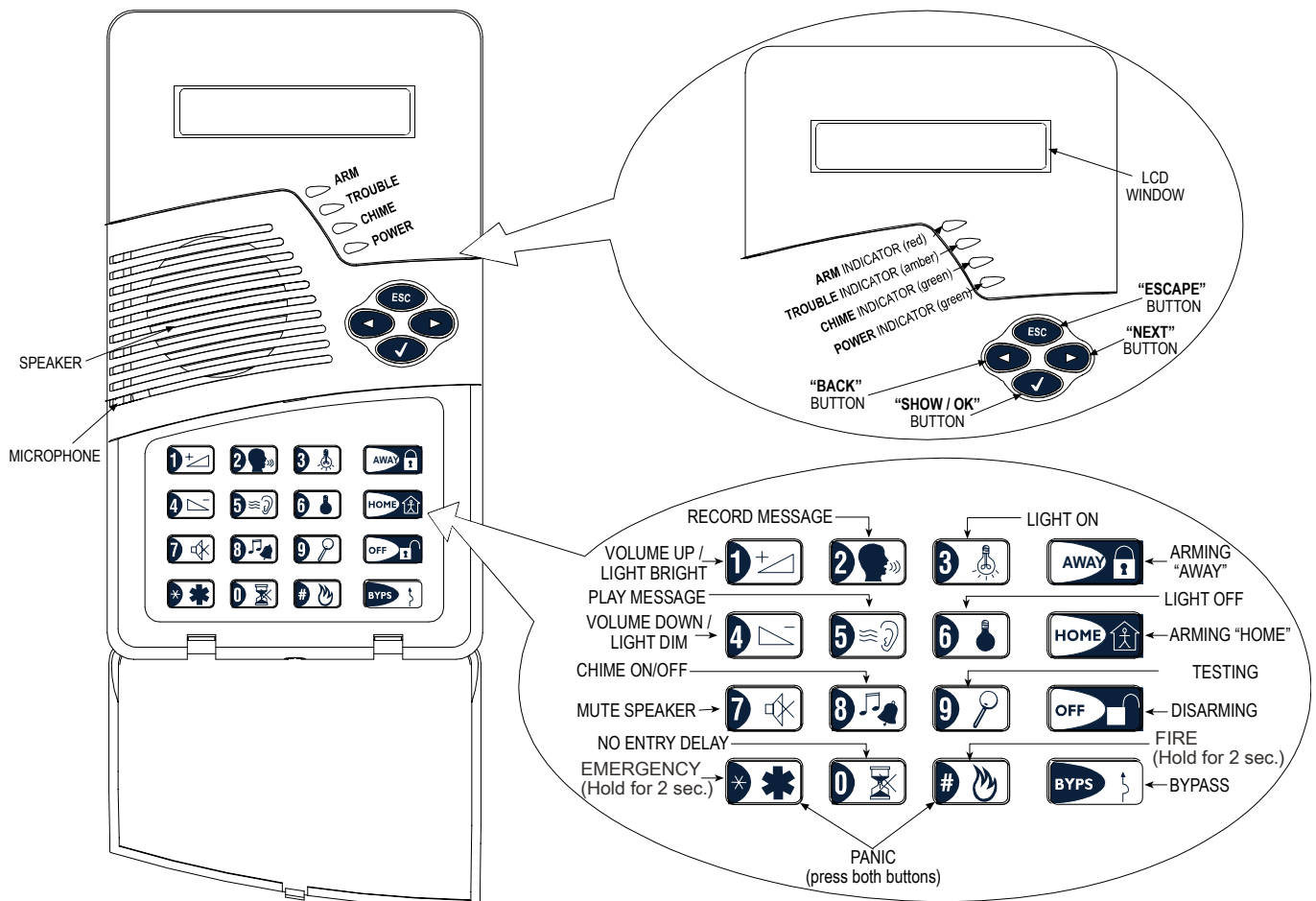


Figure 1: External View

2. SPECIFICATIONS

ELECTRICAL

Battery Power Source: Two 3 Volt Lithium batteries, type CR123A (Sanyo or equivalent).

Battery Life Expectancy: 2 years (for typical use).

AC Power Supply (optional): Plug-in transformer.

120 VAC, 60 Hz / 9 VAC, 0.35 A min. (in the U.S.A.)

230 VAC, 50 Hz / 9 VAC, 0.35 A min.

UL installation: Use transformer type OH-35048AT, manufactured by Oriental Hero Electrical Factory.

In Europe and elsewhere: Use only Safety National Approved AC adapter, mains-to-9 VAC, 0.35 A min.



AC Current Drain: Approx. 30 mA standby, 300 mA max. at full load.

Display: Single line, back lighted 16-character LCD and 4 LED indicators.

Control Functions: Home Arming, Away Arming, Bypass, Disarming, Latchkey, Light ON / OFF, Light Dim / Brightness, Recording, Forced Arming, Panic, Fire and Emergency calls.

Sleep Mode: Used to minimize current consumption. The unit enters sleep mode 15 seconds after last use (applies only when using batteries or when there is a power failure).

Supervision: A periodic supervision message (programmable) is transmitted automatically once every 15 minutes (Europe), once every 60 minutes (USA), or according to the local standards. This function can be disabled.

Panic Alarm Message: Activated by simultaneously pressing the  and  keys.

Tamper Switch: Normally closed. A tamper signal is transmitted in three ways: when the MKP-150 case is opened; when the keypad assembly is separated from the bracket; or if the MKP-150 unit is ripped from the wall.

Compliance with Standards: FCC part 15, EN 50131-1 Grade 2 Class II, TS 50131-3 and Directive 1999/5/EC

RF SECTION

Operating Frequencies: 315 MHz (in USA & Canada) or other UHF channels per local requirement in the country of use.

Receiver Type: Super-heterodyne, fixed frequency

Receiver Range: 600 ft (180 m) in open space

Antenna Type: Spatial

Coding: Two-way wireless protocol

ENVIRONMENTAL

For indoor use only.

Operating Temp. Range: 0°C to 49°C (32°F to 120°F)

Storage Temp. Range: -20°C to 60°C (-4°F to 140°F)

Humidity: 85% relative humidity, @ 30°C (86°F)

PHYSICAL

Dimensions: 172 x 99 x 39 mm (6 7/8 x 3 15/16 x 1 9/16 in.)

Weight: 375 g. (13 oz)

Mounting: Surface-mounted

Color: Off-white

3. INSTALLATION AND WIRING

Perform the procedures as illustrated in the following Figures.

Note: Mount the unit in a location which will help to attain optimum signal reception from the PowerMax+ unit (refer to *Installing Wireless Systems Installation Guide – The Right Way*, document no. DE2000W, for further details).

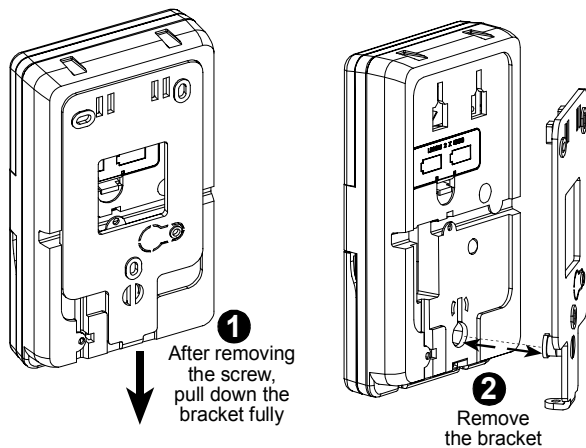
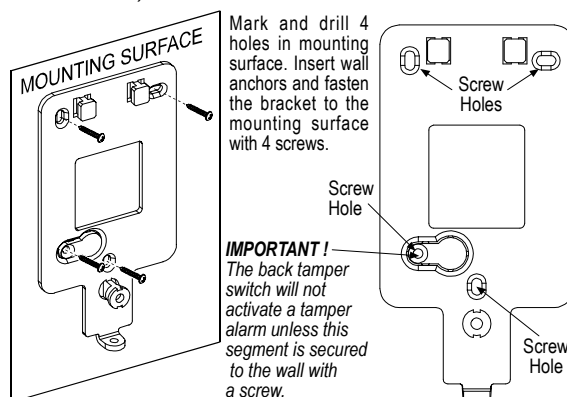
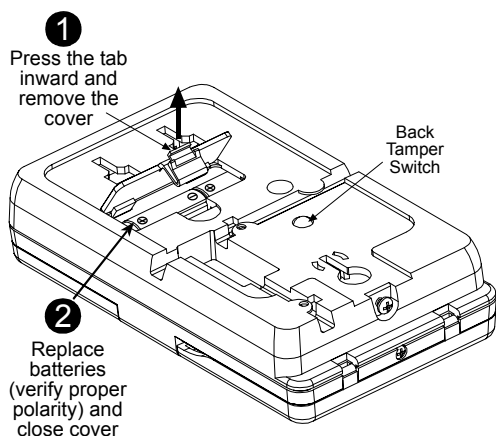


Figure 2: Bracket Removal



Note: Leave at least 3 cm (1.25 in.) free space around the bracket.

Figure 3: Bracket Mounting



Note: After battery replacement, perform the enrolling procedure followed by panel mounting.

Figure 4: Battery Replacement

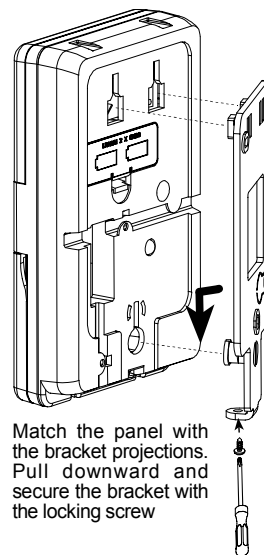


Figure 5: Panel Mounting

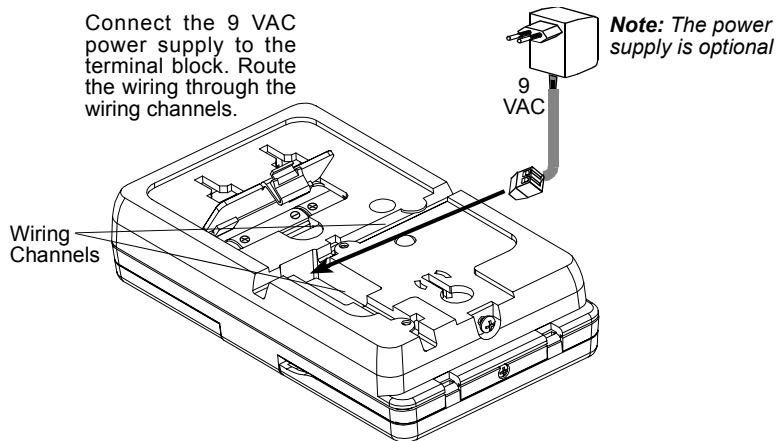


Figure 6: Wiring

4. ENROLLING/DELETING THE MKP-150 FROM THE POWERMAX+ MEMORY

To enroll all the MKP-150 functions (for complete list see PowerMax+ Installer Guide), enter the PowerMax+ Installer Mode from the PowerMax+ keypad, and proceed as shown in the following illustration.

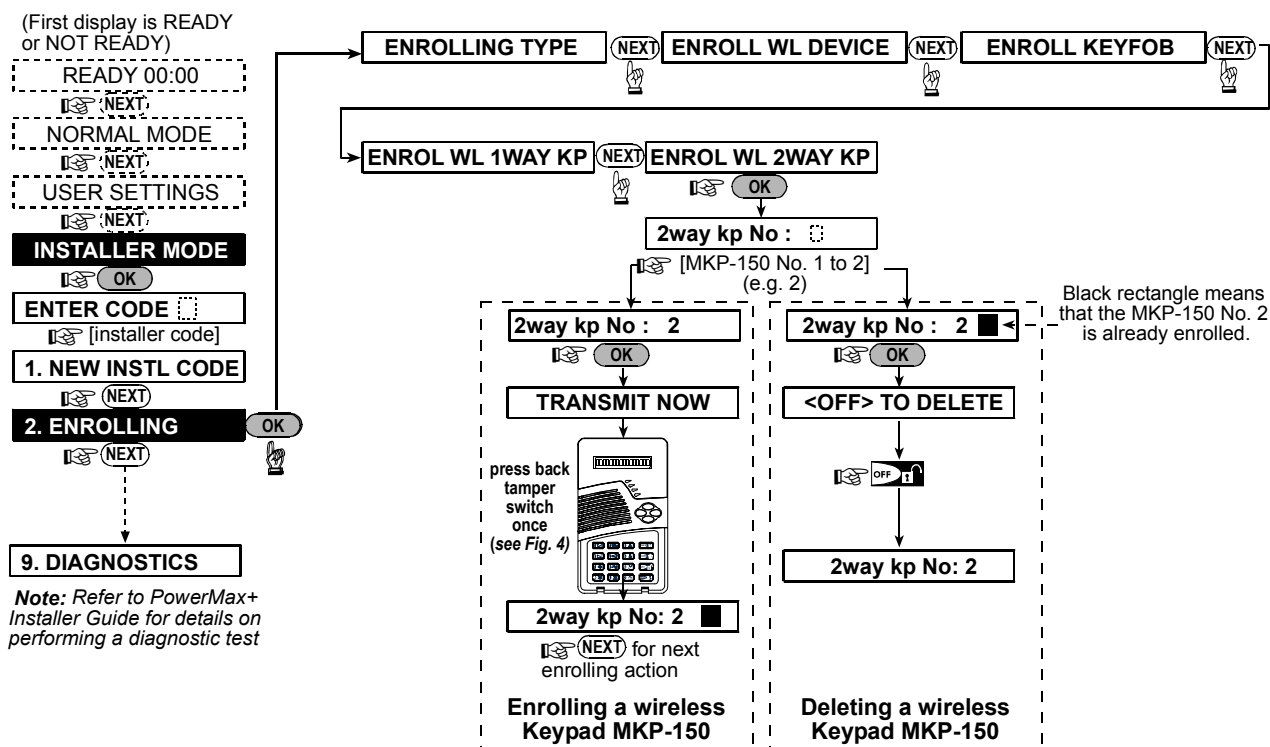


Figure 7: Enrolling / Deleting a MKP-150 Device from PowerMax+ Memory

5. DEFINING MKP-150 PARAMETERS

5.1 Installer Menu Functions

Important: All installer settings affect only the specific keypad on which the settings were performed.

The Installer menu enables you to perform three separate functions, as follows:

SUPERVISION

The keypad transmits supervision reports periodically to the PowerMax+.

The options are: **15 minutes**, **1 hour** and **disable**.

PIEZO BEEP

Here you determine whether warning beeps will sound or muted during exit and entry delays.

Options: **enable beeps**, **off when home** and **disable beeps**.

RECORD SPEECH

This mode allows you to record up to 5 custom zone names.

SERIAL NUMBER

Enables reading the system serial number for support purposes only.

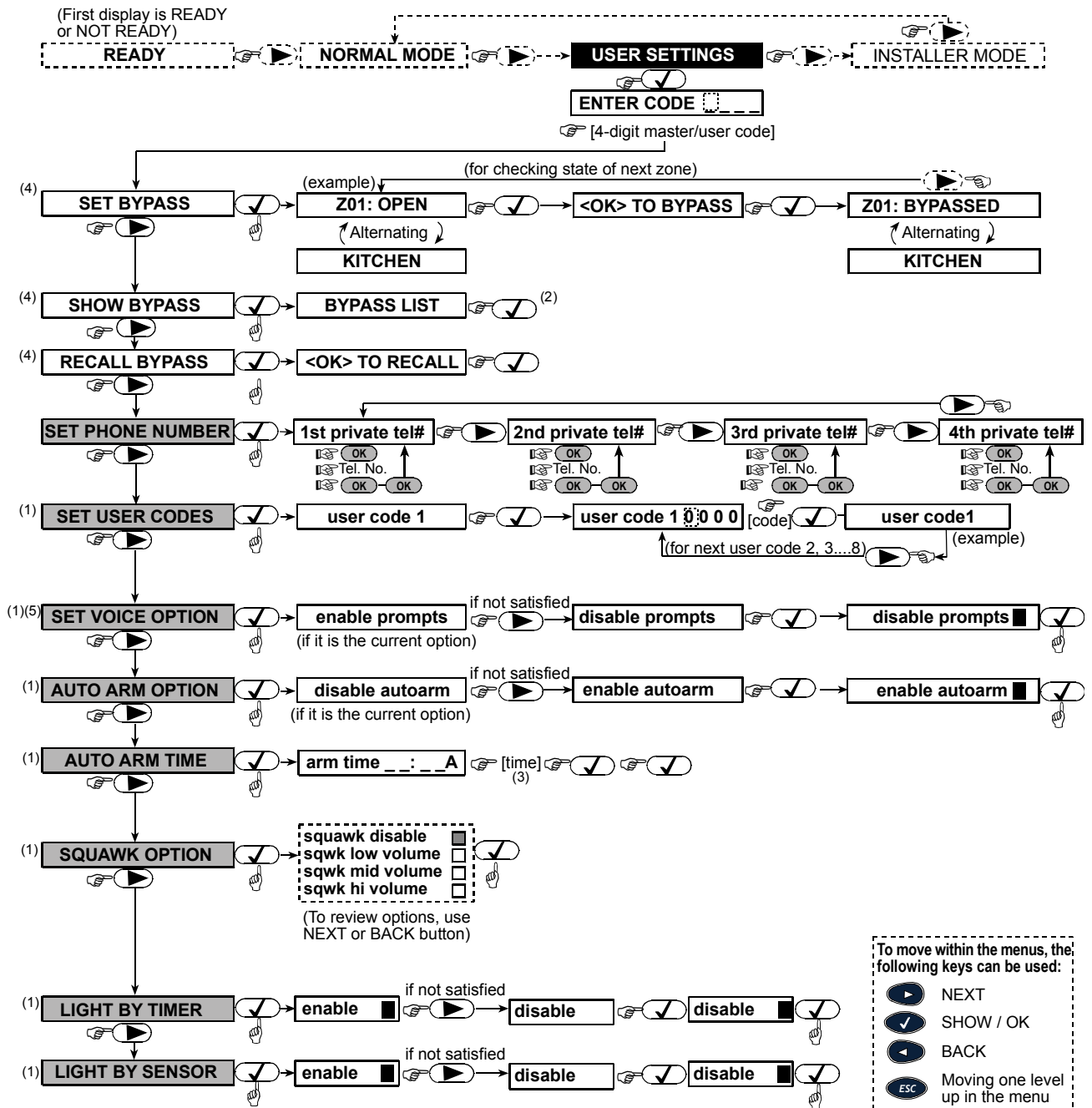
5.1.1 To Set Supervision Time

Make sure the system is not in Arm mode.

The installer's menu is accessible only to those who know the installer's code, which is **9→9→9→9** by factory default.

A. Press the next button (▶) repeatedly until the display reads:

INSTALLER MODE



NOTES

- (1) Function inside black rectangles are accessible only if master user code was entered.
- (2) Press OK to display the number, state and name of first bypassed zone. Press NEXT/BACK repeatedly to view all the bypassed zones.
- (3) To enter "A" (AM) press [] (or one of the 3 keys above it), to enter "P" (PM) press [] (or one of the 3 keys above it). (Not functional if the time format has been set to the 24 hour clock via the PowerMax+.)
- (4) SET/SHOW/RECALL BYPASS menus are accessible only if "manual bypass" has been selected by the installer via the PowerMax+.
- (5) In the SET VOICE OPTION, if you select "enable prompts", the PowerMax+ mute speaker button [] is active.

Figure 9: User Settings Flow Chart

